

# 56th Annual Fighting Island Regatta

**Saturday August 24, 2019**

**Hosted by the LaSalle Mariner's Yacht Club (LMYC) LaSalle, Canada**

## **SAILING INSTRUCTIONS**

### **1 RULES**

**1.1** The regatta will be governed by the rules as defined in The Racing Rules of Sailing 2017 – 2020. The Prescriptions of Sail Canada will apply. These can be found at <http://www.sailing.ca/>

**1.2** Sailing Instructions will be posted on the LMYC website, and available at LMYC anytime.

**1.3** The Essex County PHRF Class Rules will apply <http://ec.phrf.ca/rules.html>

**1.4** The Equipment Rules of Sailing shall be used  
<http://www.sailing.org/documents/equipmentrules/index.php>

**1.5** The Canadian Shipping Act - Small Vessel Regulation (required safety equipment) shall apply -  
<http://laws-lois.justice.gc.ca/eng/regulations/SOR-2010-91>

**1.6** Yachts shall carry proper sail numbers on mainsails, spinnakers and any head-sails attached having a luff perpendicular exceeding 130%. Yachts without proper sail numbers shall be subject to protest.

### **2 ENTRIES**

**2.1** Competitors may enter by delivering a completed entry form and paying the \$30.00 entry fee to LMYC 2640 Front Road, LaSalle Ontario before 2000 on August 23, 2019. A late fee of \$20.00 applies after that time. Online registration is possible on the NoticeOfRace.net event website via our website <http://www.lasallemarinersyachtclub.com>

### **3 NOTICES TO COMPETITORS**

**3.1** Changes to the Sailing Instructions will be posted by 2000 hrs Friday August 23, 2018 on the event website, via NoticeOfRace.net and on the LMYC website

**3.2** Changes to class splits will be posted by 2000 hrs. Friday August 23, 2019 at L.M.Y.C. on the event website, via NoticeOfRace.net and on the LMYC website.

### **4 DISCLAIMERS of LIABILITY**

**4.1** Competitors participate in the regatta entirely at their own risk. See Rule 4 of the Racing Rules of Sailing - Decision to Race. The organizing authority will not accept any liability for material damage or personal injury or death sustained in conjunction with or prior to, during, or after the regatta.

### **5 INSURANCE**

**5.1** Each participating boat must carry liability insurance. Proof of Insurance is to be provided as a part of the registration requirements.

### **6 CUSTOMS**

**6.1** Skippers are responsible for making sure they follow the proper customs procedures for their boat and crew. The organizers of this regatta and L.M.Y.C. are not responsible if the procedures printed here change. If you possess a valid I-68 (or Nexus) you must call customs upon arrival at 1-888-226-7277. L.M.Y.C. is a designated port of entry.

## **7 FURTHER INFORMATION**

**7.1** Please contact the Race Director Maciek Konkolowicz at (519) 982 4416 (mkonkolowicz@gmail.com) for further information.

**7.2** The LMYC Web site: <http://www.lasallemarinersyachtclub.com/racing/>

## **8 RACING AREA**

**8.1** The racing area will be the Detroit River, around Fighting Island

## **9 COURSES and MARKS Also see 17 and Attachment A**

**9.1 START** The starting area will be approximately ½ mile NE of the north tip of Fighting Island on the Canadian side of the shipping channel.

**9.2 The starting line** will be between an orange start mark and an orange flag on a R.C. boat near the shallows of the Canadian shore.

**9.3 The course** shall be designated by a number board on the Race Committee boat

**9.4 The finishing line** shall be between an orange mark in the water just off the south tip of Grassy Island (near LMYC) and a blue flag on a Race Committee Boat approximately perpendicular from said mark

**9.5** The distance for handicaps is listed for each course – see section 17

## **10 TIME LIMIT**

**10.1** There shall be no time limit.

## **11 PROTESTS**

**11.1** A protesting yacht shall lodge a written protest with the Race Committee no later than 1 hour after finishing.

**11.2** All provisions of Rule 60 shall apply.

## **12 SCORING**

**12.1** In accordance to Rule 89.3(a) Appendix 'A' will apply. A boat's corrected time shall determine her finish position. The Low Point scoring system will be used.

## **13 AWARDS**

**13.1** Awards will be presented at LMYC after the race.

## **14 RADIO COMMUNICATIONS**

**14.1** The Race Committee will monitor V.H.F. channel 68.

**14.2** Except in an emergency, a boat shall neither make radio transmissions while racing nor receive radio communications not available to all boats. This restriction also applies to mobile telephones.

**14.3** Competing yachts withdrawing from the Race shall notify the Race Committee as soon as possible.

## **15 PRIZES**

**15.1** If there are 1-3 boats in a division, 1 flag (first place) is awarded. If there are 3-5 boats, the first two positions awarded. If there are 6 or more boats in a division, then 1st, 2nd and 3<sup>rd</sup> positions will be awarded.

**15.2** The Commodore Alan Moore Trophy will be presented to that boat with the overall best corrected time.

**15.3** The Inter-Island Perpetual Trophy will be presented to the boat with the fastest elapsed time.

**15.4** This Fighting Island Regatta is a counter towards the ECPHRF Lake Erie Boat of the Year

## **16 START RULES, SEQUENCE, CLASSES, CLASS FLAGS, CLASS PENNANTS**

**16.1** Rule 26 will be in effect for all starts.

**16.2** Rule 30.1: "Round the End Rule" is in effect for all starts. Code flag "I" will not be displayed from the Race Committee boat.

**16.3** The Race Committee will issue 5 blasts of a horn approximately 1 minute prior to the warning signal for the first class, unless the race has been postponed, then the normal postponement procedure will take over and 5 blasts will not occur.

**16.4** The warning signal for the first class will be 11:55

**16.5** Class Rating and Start Order    Class Flag and Pennant Colours

P.H.R.F. A 114 & lower            - Yellow

P.H.R.F. B 114 thru 144        - Green

P.H.R.F. C 144 & higher        - Orange

J.A.M.                                - All White

**NEW!** Short Handed Class        - Pink

**16.6** Short Handed Class: Any boat that does not meet the minimum crew requirement of 3 (see ECPHRF rules) and does not wish to sail in J.A.M. can race in our new Short Handed Class. They may also sail single handed if they wish. They may fly a spinnaker and as such their spinnaker rating will be used for handicap purposes. If they do not have a spinnaker rating, the Regatta Chairperson will assign one. They will not be eligible for "Best Corrected Time" prize but are eligible for "Fastest Elapsed Time" prize.

**16.7** Class pennants (not smaller than size 6"x6") shall be displayed from the aftermost backstay at least six feet above the deck of each yacht. Yachts without a proper pennant shall be subject to protest.

## **17 RACE COURSE – Also see attachment A**

**17.1** Race course number will be displayed on the committee boat as **1, 2 or 3**

**17.2 NEW!** Green spar DF3 is no longer a mark of the course for the upstream portion of **courses #1 and #3.**

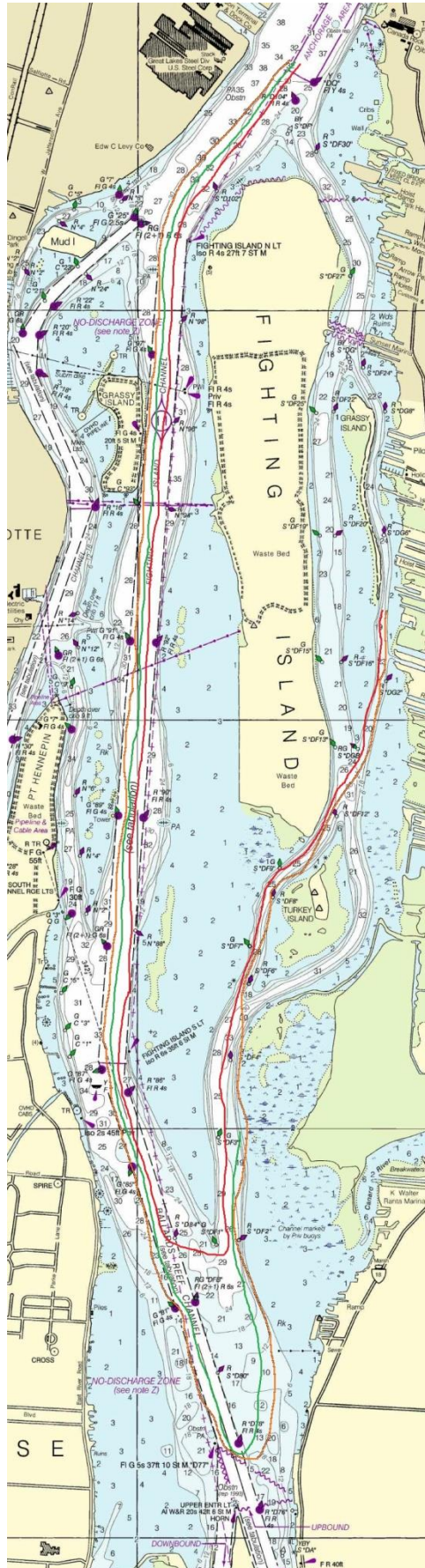
**COURSE #1** - Downstream using Fighting Island Channel, leaving Fighting Island North Light to port, leave 1st Red Spar in Ballards Reef Channel (DF84) to port, round green spar (DF1) to port, upstream leaving Turkey Island to starboard and Bifurcation Buoy DGB to port, to finish between Race Committee and a mark near LaSalle Mariner's Yacht Club off of the south tip of Grassy Island. . . **(9.45 nm)**

**COURSE #2** - Downstream using Fighting Island Channel, leaving Fighting Island North Light to port, leave 1st Red Spar in Ballards Reef Channel (DF84) to port, downstream to red buoy(D-78) leaving it to port, upstream leaving DF1 to port to finish between R.C. boat & DF3. . . **(8.71 nm)**

**COURSE #3** - Downstream using Fighting Island Channel, leaving Fighting Island North Light to port, leave 1st Red Spar in Ballards Reef Channel (DF84) to port, downstream to Red Buoy (D78) leaving it to port, upstream leaving green spar (DF1) to port, Turkey Island to starboard, and Bifurcation Buoy DGB to port, to finish between the Race Committee boat and a mark near LaSalle Mariner's Yacht Club off of the south tip of Grassy Island. . . **(11.55 nm)**

**SHORT COURSE** - (To be used at discretion of Race Committee) - Exactly as Course No. 1, but shortened to finish between a mark in area of green spar (DF3), due north in upstream channel, and a Race Committee boat to the east of it. The R/C boat will fly code flag "S". . . . **(6.67 nm)**

## Attachment A



Course #1 

Course #2 

Course #3 

### NOTICE!!

Please remember that freighters and other large commercial vessels have the right of way. Any participant that interferes with commercial traffic will be disqualified from the race. Once the decision has been made to disqualify a participant, no appeal will be allowed. Patrol boats will be monitoring participants in the vicinity of commercial traffic to ensure compliance of the right of way rules. The disqualified boat will be reported to the Race Committee as soon as possible.

Your co-operation will affect the entire future of yacht racing on the river.

Thank you.